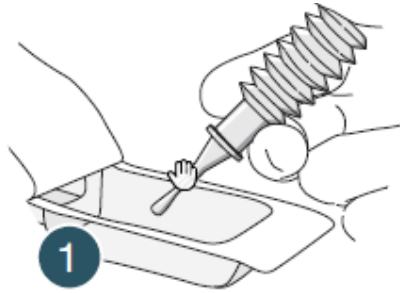


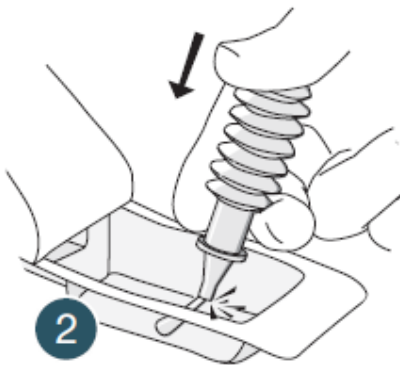
# Cathejell

Sterile & Clear Lubricant Gel

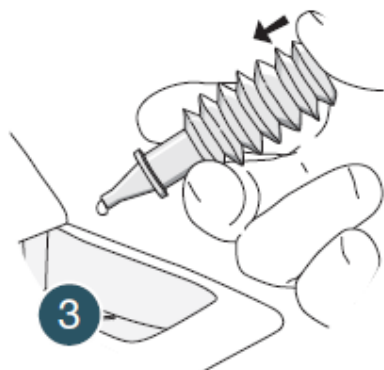
## How to use?



Peel open the blister pack. Pick the syringe up by the collar and position thumb at the end of the accordion.



Remove the tip by snapping it off downwards onto the sterile field (a quick snap, rolling over the tip in the opposite direction for a clean break).

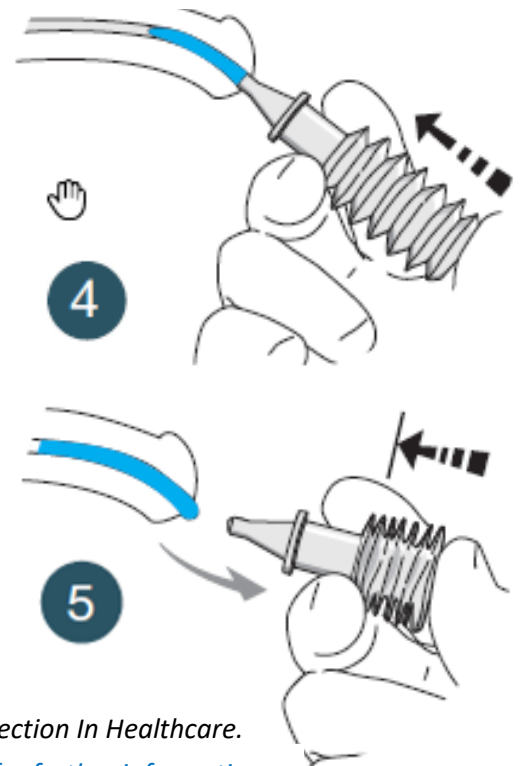


*“Aseptic technique is the most important component of aseptic practice because a key part cannot be contaminated directly if it is not touched.” \**

Ensure the syringe is being held as per **Image 3**.

*Note: the tip is countersunk and smooth*

Insert the applicator nozzle into the meatus and instil slowly - maintain steady pressure.



1. Slowly depress the accordion syringe completely.
2. **While the syringe is depressed, remove it from the patient.** This avoids a suction effect.

